



MILLMAN, HUNT & CO.,
— AND —
SAMUEL LONG & CO.,
NIND MILLS, WOTTON-UNDER-EDGE.

Manufacturers of Fine Woollen Cloths, Printers' Blanketing, Serges, Worsted Coatings, etc.

MESSRS. MILLMAN, HUNT AND COMPANY'S mills, at Wotton-under-Edge, are interesting not only by reason of the high stand they take in the cloth industry in Gloucestershire, but also by reason of their long and eventful history. At one time Wotton-under-Edge was the centre of a number of mills of more than national reputation, though from various causes they were one by one suspended, this Company being the only survivor. It is probably now the oldest cloth mill in this entire section, a portion of the premises still occupied having been in use for upwards of three centuries. In recent years several changes have taken place in the *personnel* of the proprietors, the present Company having been formed in 1890. In 1893 the business, which had for many years been very successfully carried on by Messrs. Samuel Long and Company, at Charfield, near Wotton-under-Edge, was also taken over by this Company, the present members of whom are Messrs. Francis Millman and Benjamin Hunt. It is interesting to know that both the Millman and

Hunt families have been prominent in the West of England cloth manufacture for several generations.

Although the Nind Mills, as Messrs. Millman and Hunt's Wotton-under-Edge mills are called, are old established, they have been kept thoroughly up-to-date by the addition of new buildings and the installation of the latest machinery. In 1890 a new weaving shed—a particularly well-lighted and well-arranged building—was erected, and equipped with the most modern and approved looms, and other scarcely less important additions have been made.

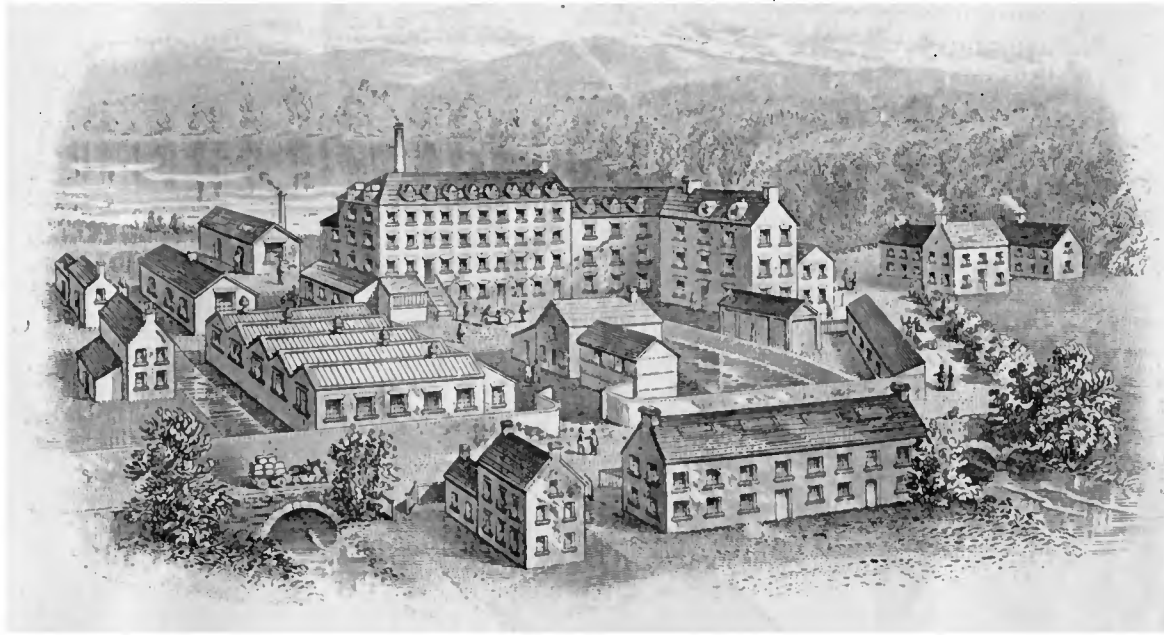
The freehold premises owned and occupied by the Company comprise sixteen acres in one tract. A noticeable advantage is the fine water

they have the further advantage of a supply of uncontaminated water, a very important factor in the production of the fine colours for which their weaves have become noted. The motive power is supplemented by steam and gas engines, the gas being generated on the premises by a plant designed and erected by a well-known Gloucestershire engineering firm.

During their entire history Messrs. Millman, Hunt and Company's fabrics have represented the highest stage of manufacture, and they have never attempted the production of anything but the best quality. At the International Exhibition in London, 1851, the first International Exhibition held in the world, their productions were honourably mentioned, and they have since contributed materially to the prestige enjoyed by the cloth manufacturers of this district.

They manufacture all kinds of high grade cloths from Australian and German wools only, including among their specialities hunting buckskins and scarlets, military cloths, cricket, tennis and shirting flannel, billiard, piano, and carriage cloths, box cloth, Devons in all colours, etc. They also make a special feature of best quality printers' blanketings, of which they probably make a larger quantity than any other one firm in the district.

The Company maintain London offices, and have agents throughout the British Colonies, a considerable portion of their productions being for export.



"NIND MILLS," WOTTON-UNDER-EDGE.

power available, with an ever failing supply sufficient to drive three large water wheels. The reservoir is fed by the "Little Avon," and as the Nind Mills are the first to use this stream,

ROBERT S. DAVIES & SONS,
STONEHOUSE MILLS, STONEHOUSE.

Woollen Cloth Manufacturers.

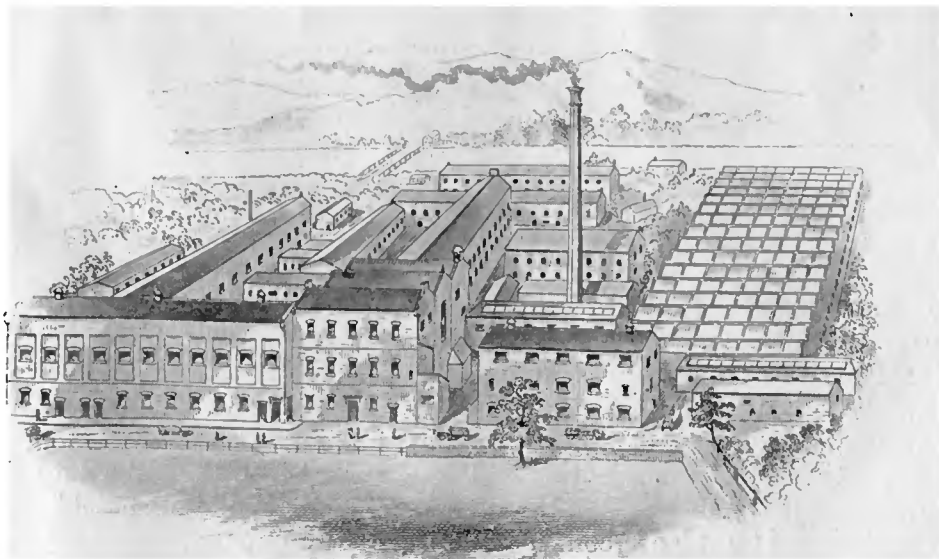
FOR over a century Messrs. Robt. S. Davies and Sons' Mills have been well known in the West of England cloth trade, the industry having been established in 1798 by Mr. Robt. Stephen Davies, the grandfather of Mr. William Davies, J.P., the present head of the Firm. The Firm operate at Stonehouse two mills, known respectively as the Upper and Lower Mills, situated about a quarter of a mile apart. The two mills cover a large area of ground, and are admirably situated near both the Great Western and the Midland railways. In 1847 the Upper Mill was de-

stroyed by fire, being rebuilt in 1875, when it was materially enlarged and improved. In both the mills alterations have been made from time to time in the buildings and the mechanical equipment, and every provision has been made to meet the requirements of an extensive patronage. Through the courtesy of the Firm we are enabled to present herewith two excellent engravings giving a general view of the Upper and Lower Mills. We regret that no engraving could give an adequate idea of their very picturesque surroundings, an advantage which these, like many of the Gloucestershire cloth mills, possess in a marked degree.

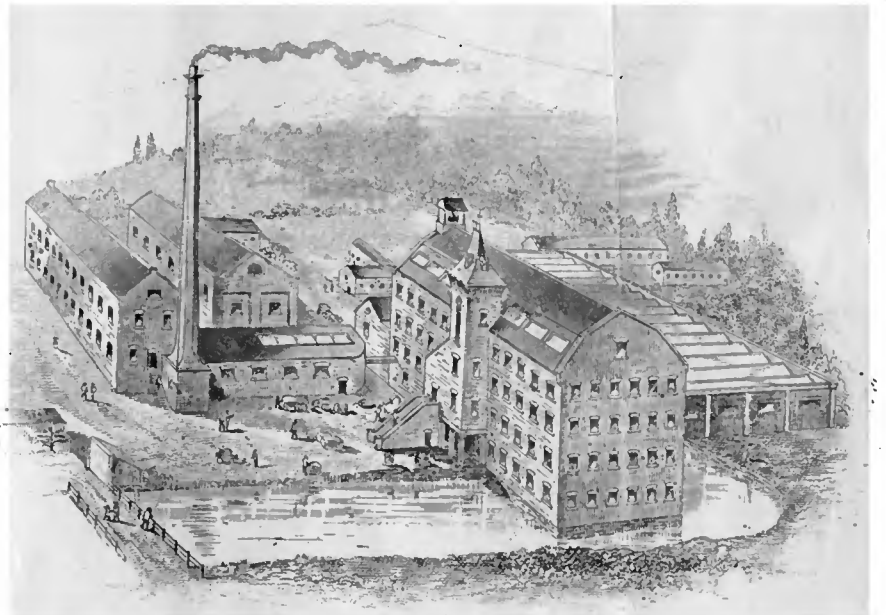
Messrs. Davies and Sons manufacture fine worsteds in black, blue, and mixtures, vicunas, flannels, riding tweeds and Bedford cords, fine blue navy cloths, and doeskins, beavers, mel-

tons, Venetians, Devons, scarlets, waterproof covert coatings, carriage and livery cloths, etc. The dyeing is done on the premises, all colours being guaranteed. A great speciality is made of indigo blue for naval purposes, and woaded blacks for liveries. At the first International Exhibition, London, 1851, and at subsequent exhibitions they were awarded medals for the excellence of their manufactures, and their weaves have long enjoyed the highest reputation among the leading London and provincial woollen merchants.

Messrs. Davies and Sons carry a very large stock and their warehouse is replete with an endless variety of the latest styles of material.



STONEHOUSE LOWER MILL.



STONEHOUSE UPPER MILL.